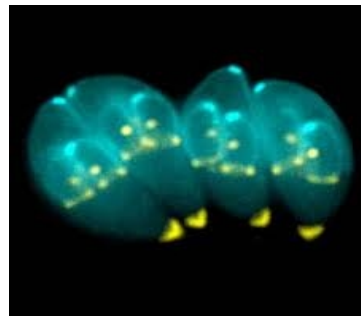


MAGO 4

Delta Biologicals
A Subsidiary of Erba Diagnostics, Inc.



Infectious diseases

A MEMBER OF
Erba[®]
Mannheim

961-100R	Syphilis Screen Recobinant	192 test	720-620	Is [®] EBNA-1 IgG	96 test
961-150	Treponema IgG	96 test	720-630	Is [®] EBNA-1 IgM	96 test
961-151	Treponema IgM	96 test	720-640	Is [®] EBV-EA-D IgG	96 test
963-380	VZV IgG	96 test	720-650	Is [®] EBV-EA-D IgM	96 test
963-385	VZV IgM	96 test	DB-4704	Helicobacter pylori IgG	96 test
963-410	Mumps IgG	96 test	DB-4705	Helicobacter pylori IgA	96 test
963-415	Mumps IgM	96 test	DBE-048	Adenovirus IgG/IgM	96 test
963-520	Measles IgG	96 test	DBE-063	Brucella IgG	96 test
963-525	Measles IgM	96 test	DBE-064	Brucella IgM	96 test
967-800	Toxoplasma IgG	96 test	DBS-0075	WW Micro Brucella	5 x 5 mL
967-805	Toxoplasma IgA	96 test	DBE-080	Coxiella burnetii IgG	96 test
967-807	Toxoplasma IgG Avidity	48 test	DBE-081	Coxiella burnetii IgM	96 test
967-810	Toxoplasma IgM	96 test	DBE-014	Hydatidosis IgG	96 test
967-820	CMV IgG	96 test	DBE-021	Influenza A IgG/IgM	96 test
967-821	CMV Screen	96 test	DBE-050	Influenza B IgG/IgM	96 test
967-830	CMV IgM	96 test	DBE-024	Legionella pn. 1 IgG	96 test
967-835	Herpes 1+2 IgM	96 test	DBE-025	Legionella pn. 1 IgM	96 test
967-835M1	Herpes 1 IgM	96 test	DBE-026	Legionella pn. 1-6 (IgG, IgM)	96 test
967-835M2	Herpes 2 IgM	96 test	DBE-052	Leishmania (IgG, IgM)	96 test
967-837	CMV IgG Avidity	48 test	DBE-031	Mycoplasma pn. IgG	96 test
967-840	Herpes 1 IgG	96 test	DBE-032	Mycoplasma pn. IgM	96 test
967-845	Herpes 1+2 IgG	96 test	DBE-033	Mycoplasma pn. IgG/IgM	96 test
967-850	Herpes 2 IgG	96 test	DBE-035	Parainfluenza 1 IgG/IgM	96 test
967-860	Rubella IgG	96 test	DBE-037	Parainfluenza 2 IgG/IgM	96 test
967-867	Rubella IgG Avidity	48 test	DBE-039	Parainfluenza 3 IgG/IgM	96 test
967-870	Rubella IgM	96 test	DBE-043	Rickettsia conorii IgG/IgM	96 test
720-600	Is [®] EBV-VCA IgG	96 test	DBE-045	Tetanus IgG	96 test
720-610	Is [®] EBV-VCA IgM	96 test	DBE-038	RSV IgG/IgM	96 test

- **Wide range of ELISA tests for infectious diseases**
- **Ready to use reagents**
- **Complete panel for the diagnosis of EBV infection**
 - **Capture methods for IgM antibody detection and confirmation with Avidity test**
- **Selective use of the antigens (recombinant or natural proteins) in order to obtain the best performance required**
- **All kits CE marked**
- **MAGO 4 pre-programmed test procedures**